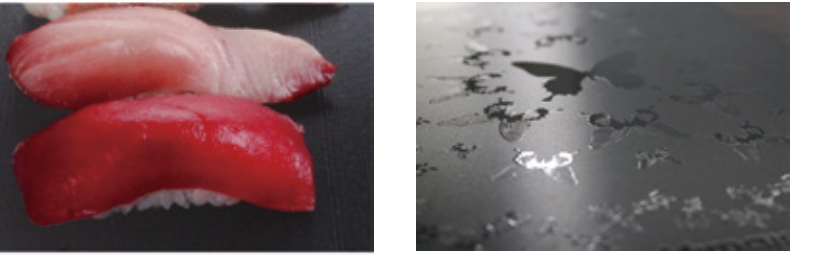


# Clear Ink

Using clear ink will enhance your design  
 Clear ink will give a more beautiful glossy finish to realize highly value-added enhanced design. By outputting clear ink and color ink at the same time, the productivity will not be affected during printing. Our new technology "MCC" has cleared off the surface dust contamination on the installation site when using clear ink.  
\*MCC = Mimaki Clear Control

A glossy touch can be added with clear ink even on a part of an image as well as entirely on the whole surface.  
 Printing with a partial glossy touch  
 Using clear ink partially will add a highly appealing glossy touch on your print. Partial glossy printing will make food look much fresher and add an extra touch of class to your print.

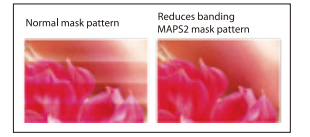


Glossy printing on the whole surface  
 Using clear ink entirely will make your print exclusively luxurious. Glossy printing on the whole surface opens the door to really appealing sign and graphic making.



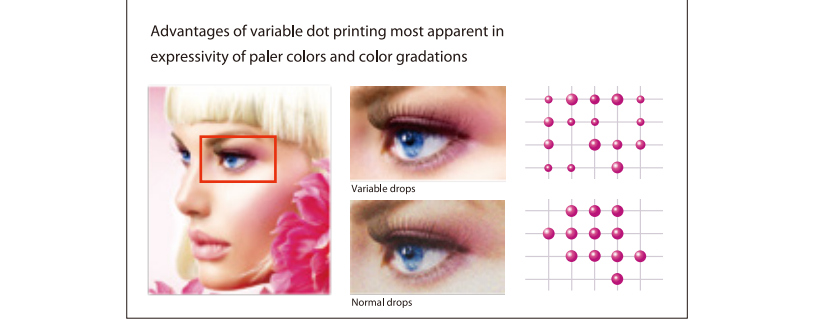
# High Quality Print

MAPS2: Mask pattern that works to effectively reduce banding  
 MAPS2(\*) is equipped to effectively curb banding. Printing applies ink while controlling the dot density to add a gradational tone effect, which works to make banding less visible. The normal mask pattern is also available, so you can select an optimal pattern that matches with the particular material and application.  
\*MAPS2 = Mimaki Advanced Pass System 2



Smooth and beautiful color gradations are made available by Mimaki's original head control technology

Variable drops function provides 3 different drop sizes at once. It produces smooth and natural gradation, without granular appearance even in the 4-color mode.



# The perfect UV ink for each material and application

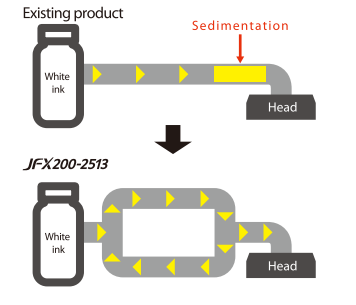
Various UV-curable ink types to satisfy a wide range of application needs. A user can choose an optimum ink depending on materials.

Type	Stretchable UV-curable ink				
Product name	LH-100	LUS-120	LUS-150	LUS-200	LUS-350
Color	●●●●●●●●●●	●●●●●●●●●●	●●●●●●●●●●	●●●●●●●●●●	●●●●●●●●●●
Features	The LH-100 ink has a high accuracy/chemical resistance and an accurate color reproducibility. This ink is suitable for rigid materials.	The LUS-120 ink has 170% stretchability after curing. Its ink film is very flexible and will not crack during post print processes.	The LUS-150 ink has 150% stretchability after curing and printing. This ink is compatible with a wide range of materials and has a low degree of tackiness.	The LUS-200 ink has 200% stretchability after curing. The ink film retains the print quality, and will not crack even when printed materials are bent or stretched during post-print processes.	After curing, the LUS-350 ink can stretch up to 350% when heated to between 120 and 200 °C. The ink restores its rigidity after cooling to room temperature, while maintaining its molded shape and durability.

\* Optional kit - OPT-J0393/PR100/200KIT FOR JFX200 - is required for using a primer (PR-100/PR-200).  
 \*\* Stretchability of each stretchable ink may vary depending on materials, please test on actual materials in advance.

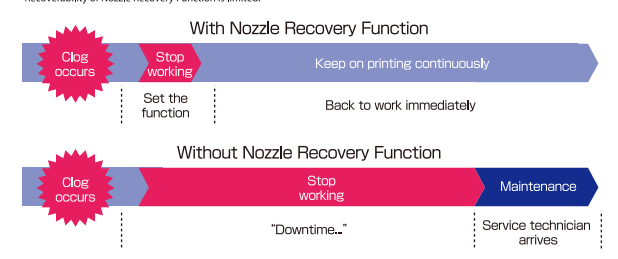
# Easy Maintenance

MCT: Mimaki Circulation Technology for White Ink  
 MCT to effectively avoid the settling of white pigment in the ink lines by regularly circulating white ink is standard equipment. It prevents any print troubles and enables stable output from the startup time. In addition, MCT contributes to reduction of ink waste, thereby supporting environmentally and economically friendly applications.  
\*MCT works only with white ink. (MCT = Mimaki Circulation Technology)



# Nozzle Recovery Function for continuous operation

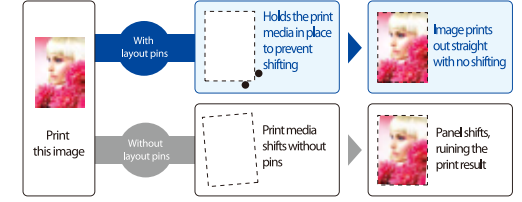
When print troubles occurred due to clogged nozzle and even the nozzle cleaning does not work, the conventional printer have to stop printing and wait for the arrival of service person. With Nozzle Recovery Function, the continuous printing is possible by recovering the image quality without slowing down the speed even if a nozzle is removed or taken offline.



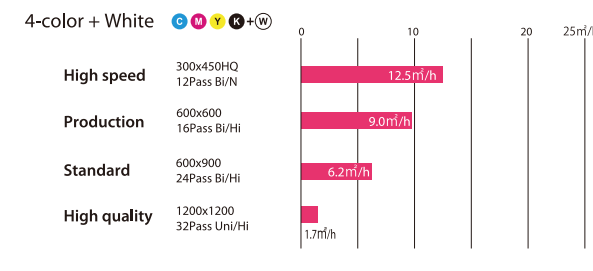
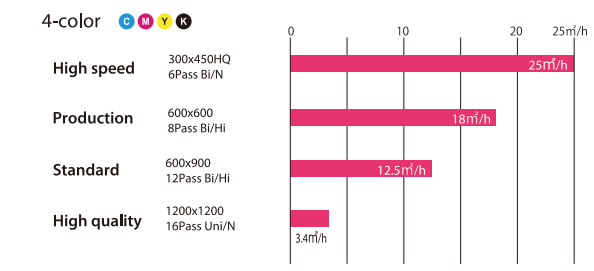
# Easy Operations

## Layout pins for exact positioning

Users previously had to be extremely diligent in lining up the position of print media when placing it on the flatbed of the printer to ensure that the media is not tilted compared to the print surface and that the origin is centered correctly. This printer is now equipped with layout pins and a scale designed to help resolve these issues. The layout pins work to secure the print media in place to prevent it from shifting and the scale used to check the position of the print media before printer settings are made, allowing images to be printed without shifting.



# Print Speed



## Specifications

Item	Specifications	
Head	On-demand Piezo head (Array of 2 heads stagger)	
Diagram resolution	300, 450, 600, 900, 1,200dpi	
Ink	Type	Rigid UV curable ink: LH-100
	Ink supply system	Stretchable UV curable ink: LUS-120, LUS-150, LUS-200 and LUS-350
	Ink circulation system <sup>1)</sup>	Supplied from 1-liter bottles for each color
Maximum diagram dimensions (WxD)	White ink circulation using Mimaki Circulation Technology (MCT)	2,500 x 1,300 mm
	Dimensions (WxD)	2,500 x 1,300 mm
Media	Height	50 mm
	Weight	50 kg/m <sup>2</sup> (10.2 lb./ft <sup>2</sup> ), non concentrated load
Media fixation method	Absorption fixed through use of a vacuum	
Range accuracy	Absolute accuracy	±0.3 mm (± 0.01 in.) or ±0.3% of the specified range, whichever is larger
	Reproducibility	±0.2 mm (± 0.008 in.) or ±0.1% of the specified range, whichever is larger
UV device		LED-UV system
	Standard service life <sup>2)</sup>	Over 5,000 hours
Interface	USB2.0	
Certifications	VCCI class A, CE Marking, CB Report, UL (U.S. safety organization), RoHS directive, UL 60950-1, FCC class A	
Input power supply	Single phase, 200 V AC-240 V AC, 50 Hz/60 Hz, up to 12 A	
Power consumption		Up to 2.88 kVA
	Temperature	15°C-30°C (59°F-86°F)
	Relative humidity	35%-65% RH
Installation environment	Accuracy maintained temperature	18°C-25°C (64.4°F-77°F)
	Temperature gradient	Up to ±10°C/h (±18°F/h)
	Dust	Similar to standard office environments
Install Dimensions (WxDxH)	4,400x2,250x1,250 mm (173.2x88.5x49.2")	
Assembled Dimensions (WxDxH)	4,400x2,450x1,250 mm (173.2x96.4x49.2")	
Weight	650 kg	

<sup>1)</sup> MCT works only with white ink.  
<sup>2)</sup> The standard service life times listed are estimates and do not guarantee the operation.

## Software

Newly developed RIP software compatible with excellent user-friendliness and higher functionality

# Raster Link 6

Beautiful and advanced print realization by the simple and intuitive operation with useful icons and layout. Enriched expressiveness with various functions including color replacement

<Supports Web update function>  
 ● Program update and profile download can be easily performed via internet.

**Inks and substrates:**  
 As physical properties of ink (adhesion, weather resistance etc.) are different depending on media, please be sure to have a print test in advance.  
 Depending on the application, primers, other surface treatment or surface protection such as lamination may be necessary.

**Safety notice:**  
 This product is equipped with UV irradiation equipment.  
 Please pay attention to the following notes in order to use safely.  
 -Do not look directly into the UV light source nor place your hand, or expose your skin directly to the UV light source.  
 -Depending upon print mode, there might occur some VOC emission from printed parts not yet cured and hardened.  
 -In addition, please be sure to read the instructions and guidelines of the manual carefully to follow.

- Some of the samples in this catalog are artificial renderings.
- Specifications, design and dimensions stated in this catalog may be subject to change without notice (for technical improvements, etc.)
- The corporate names and merchandise names written on this catalog are the trademark or registered trademark of the respective corporations.
- Inkjet printers print using extremely fine dots, so colors may vary slightly after replacement of the printing heads. Also note that if using multiple printer units, colors could vary slightly from one unit to other unit due to slight individual differences.
- The specifications described in this catalog are as of August 2022.

**Mimaki MIMAKI ENGINEERING CO., LTD.**  
 2182-3 Shigeno-Otsu, Tomi-city, Nagano 389-0512, Japan  
 TEL: +81-268-64-2281  
[mimaki.com](http://mimaki.com)

## Mimaki Global Network

USA	MIMAKI USA, INC.	Europe	MIMAKI EUROPE B.V.
Brazil	MIMAKI BRASIL COMERCIO E IMPORTACAO LTDA	Indonesia	PT. MIMAKI INDONESIA
India	MIMAKI INDIA PRIVATE LIMITED	Australia	MIMAKI AUSTRALIA PTY. LTD.
Taiwan	MIMAKI ENGINEERING (TAIWAN) CO.,LTD.	China	SHANGHAI MIMAKI TRADING CO.,LTD.
Singapore	MIMAKI SINGAPORE PTE. LTD.	Thailand	MIMAKI (THAILAND) CO.,LTD.

## Supplies

Item	Color	Item No.	Remarks
LH-100	Cyan	LH100-C-BA	Ink Package: 1L bottle
	Magenta	LH100-M-BA	
	Yellow	LH100-Y-BA	
	Black	LH100-K-BA	
	White	LH100-W-BA	
LUS-120	Cyan	LUS12-C-BA	Ink Package: 1L bottle
	Magenta	LUS12-M-BA	
	Yellow	LUS12-Y-BA	
	Black	LUS12-K-BA	
	White	LUS12-W-BA	
LUS-150	Cyan	LUS15-C-BA	Ink Package: 1L bottle
	Magenta	LUS15-M-BA	
	Yellow	LUS15-Y-BA	
	Black	LUS15-K-BA	
	Light Cyan	LUS15-LC-BA	
LUS-200	Cyan	LUS20-C-BA	Ink Package: 1L bottle
	Magenta	LUS20-M-BA	
	Yellow	LUS20-Y-BA	
	Black	LUS20-K-BA	
	White	LUS20-W-BA	
LUS-350	Cyan	LUS35-C-BA	Ink Package: 1L bottle
	Magenta	LUS35-M-BA	
	Yellow	LUS35-Y-BA	
	Black	LUS35-K-BA	
	White	LUS35-W-BA	
Primer	PR-100	PR100-Z-BA	Ink Package: 1L bottle
	PR-200	PR200-Z-BA	
Tungsten replacement needle for ionizer	SPA-0208		4 pieces
Air filter kit	SPA-0211		10 sets

\* Stretchability of flexible ink may vary depending on materials, please have an prior test print.  
 - LH-100, LUS-120, LUS-150 and LUS-200 are GREENGUARD Gold certification ink.

## Optional Accessories

Item	Item No.	Remarks
Ionizer kit	OPT-J0342	Static eliminator kit
Vacuum unit (φ 3 mm x 200 mm (φ 0.1 in. x 7.9 in.))	OPT-J0216	Three-phase, 200 V-240 V, 30 A, 3.4 kW
Vacuum unit (φ 1 mm x 200 mm (φ 0.04 in. x 7.9 in.))	OPT-J0217	Single-phase, 200 V-240 V, 30 A, 1.9 kW
Vacuum unit (φ 3 mm x 400 mm (φ 0.1 in. x 15.7 in.))	OPT-J0232	Three-phase, 380 V-480 V, 20 A, 3.4 kW
Optional blower connector kit	OPT-J0348	Necessary kit for connecting an optional vacuum unit.
PR100/200KIT for JFX200	OPT-J0393	Necessary kit for using a primer (PR-100/PR-200)

\* If the vacuum unit that comes with the printer does not have enough suction power, please use an optional vacuum unit. When installing the optional vacuum unit, an optional blower connector kit (OPT-J0348) is also required to connect the vacuum unit to the printer.  
 - Vacuum units also require their own power supply. Line separate from that for the printer itself.

For **INDUSTRIAL PRODUCTS**

Large Format UV LED Flatbed Inkjet Printer

# JFX200-2513

# OPEN UP!

Introduction of new entry-model flatbed printer expanding the possibilities of printing business.



# High-performance entry-level model

Developed using Mimaki engineering knowhow and technology, the JFX200-2513 is an entry-level model printer that nevertheless equipped with all the necessary performance, product quality, ease of use, and environmental friendliness required of a flatbed printer.



For INDUSTRIAL PRODUCTS

## JFX200-2513



### Environmentally friendly LED-UV curing unit



The LED-UV curing unit has an exceptionally long life and lower power consumption. With its low heat output, it can be used with print media susceptible to problems with thermal deformation or color changes. Producing very few VOCs and very little odor, it is both environmentally friendly and user-friendly and works well in indoor applications such as restaurants. It also produces no potentially destructive ozone during the printing process, which dramatically lessens any potential load on the environment.



### Perfect size for installation and usage

Can be used to print 4x8 panel boards\* that are commonly used in the marketplace. Comes in a compact size for easy installation and provides excellent user-friendliness even with such high functionality.

\*1,220mmx2,440mm



Direct-to-media printing onto thick media



Display case



Indoor advertisement



Outdoor advertisement

Printing onto media up to 50 mm (1.97 in.) thick, high weather and friction resistance, printing onto media with special shapes...  
The JFX200-2513 produces unparalleled results all in high definition. Works to expand customer business by accommodating a wide variety of needs and requirements.



### Vacuum unit/suction valve

The vacuum can be turned ON/OFF quite easily and quickly from the control panel. The control panel can also be used to control two separate partitions in the X-direction of the suction area. The suction valve on the front of the printer enables the area to be controlled rather easily.



### Ink supply unit

With the newly developed ink supply unit, 1-L bottles of ink can be inserted into the system and used as is. Ink bottles can be inserted quickly and easily from the front of the printer, speeding up the replacement process.



### Direct-to-media printing onto thick media

Images can be printed out not only onto regular paper media but also directly onto thick media. Works with media up to 50 mm (1.97 in.) thick to support expansion into a wide variety of print business applications.



### Two-layer print function

Two-layer printing of separate white and full color layers is possible at the same time. A coating of white ink can be applied evenly at high accuracy to really bring rich and vibrant colors to life even more beautifully with transparent print media.